



Rail Freight Corridor
North Sea – Baltic



Connecting East and West - Rail Freight Corridor North Sea – Baltic

23rd February 2016

Oliver Sellnick

Chairman of the Management Board
Rail Freight Corridor North Sea - Baltic



Co-financed by the European Union
Connecting Europe Facility



www.rfc-northsea-baltic.eu



***Chairman of the
Management Board***
Oliver Sellnick



Managing Director
Jakub Kapturzak
info@rfc8.eu



C-OSS Manager
Florian Müller
coss@rfc8.eu

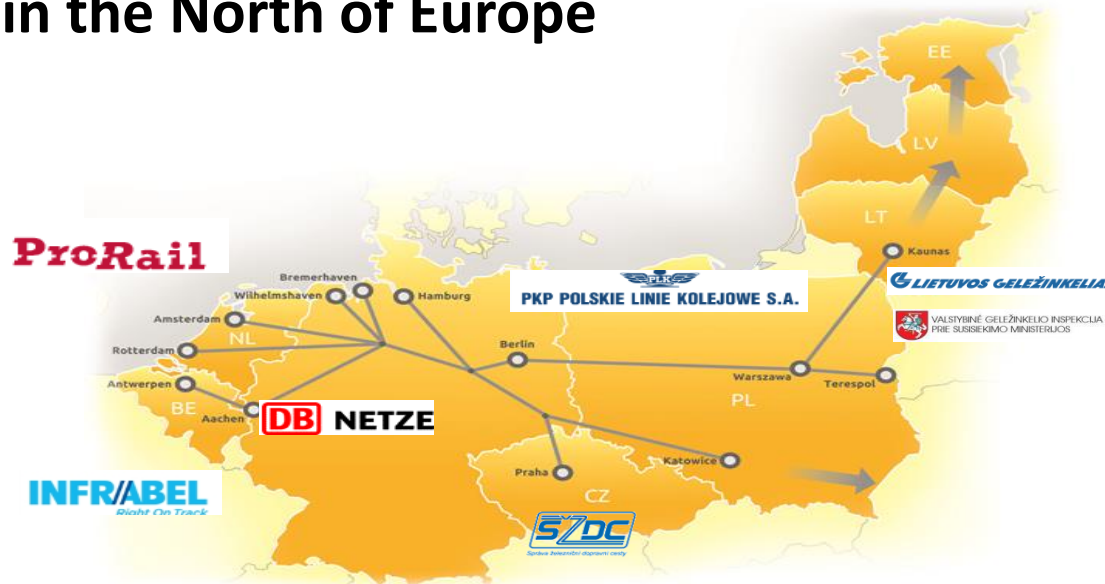


Rail Freight Corridor North Sea – Baltic

Connecting East and West in the North of Europe

Fact & Figures

- Connecting the most important North Sea ports with Central Europe and the Baltic States
- Corridor lines in total
6.105 km
- **6 Ports**
Antwerpen, Rotterdam, Amsterdam, Wilhelmshaven, Bremerhaven, Hamburg
- **171 Terminals**
- **36700 trains/year**
B/NL to D >17300 trains/year
D to CZ >6300 trains/year
D to PL >13100 trains/year



**operational
since
Nov. 2015**